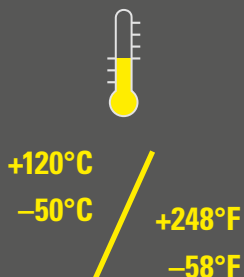


BSPA-BJ

带球结的可堆叠重载固定座

System support stackable with ball-joint



材料: PA6 MOD V0 SGA

FIPLOCK® 带球结重载固定座 BSPA由特殊改性不含卤素的PA6材料制成, 产品用于波纹管固定, 强度高, 可堆叠使用。产品上盖可打开, 其稳定性和刚度都很高。这种固定座允许在安装FIPLOCK®的细波型或粗波型波纹管后, 波纹管可旋转, 并使其在轴向方向被固定。球关节使波纹管可以在各个方向上有一定的倾斜自由度, 所有特别适用于有动态运动的场合。

Material: PA6 MOD V0 SGA

The FIPLOCK® system support BSPA is a rugged and stackable corrugated conduit mounting clamp with ball-joint made of specially modified, halogen-free PA6. The applicable cover can be re-opened and guarantees high stability and rigidity, especially in stacked arrangement. This clamps allow rotation of the FIPLOCK® corrugated conduit in fine or coarse profile when installed, and optimally fixes the conduits in the axial direction. The ball-joint further enables the applied conduit to tilt to a certain degree in all directions. This configuration is therefore specially recommended for dynamic movements on conduits.

BSPA-BJ

产品性能 / Product performances

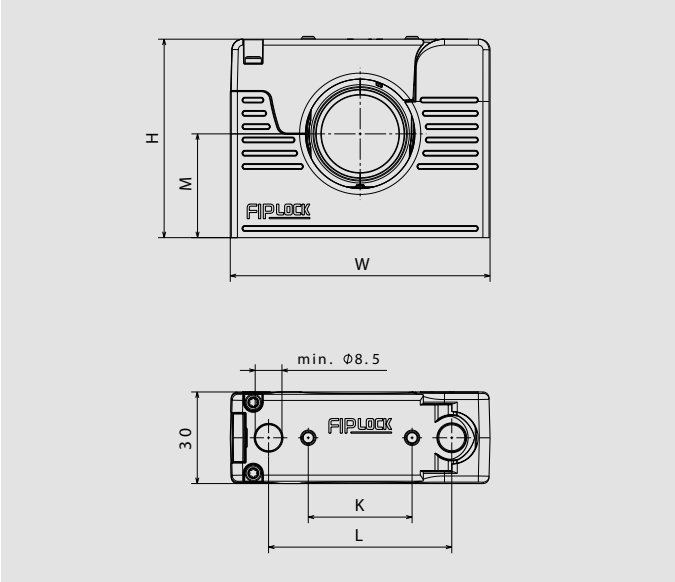
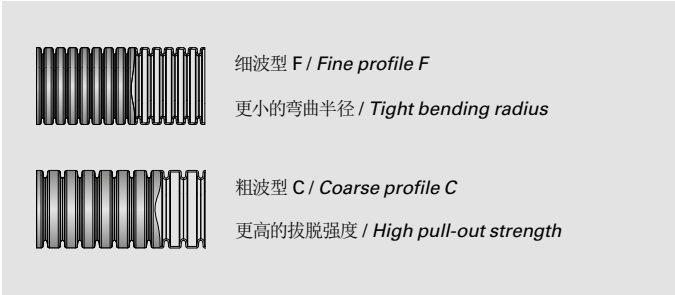
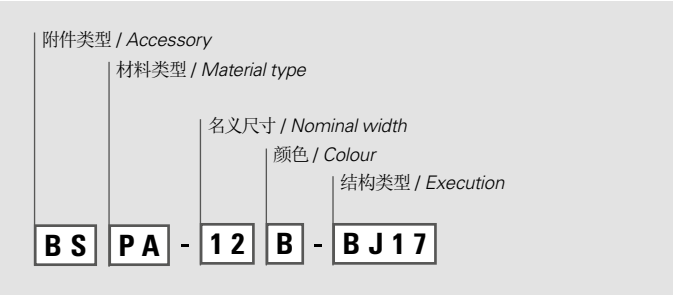
应用性能 / Application performances	特性 Characteristics	单位 Unit	标准规范 Standards, specifications	备注 Remark
温度范围 Temperature range	-50 到 / to +120 -58 到 / to +248	°C °F	IS FIP	
温度 (短周期) Temperatur (short-term)	150 (500 h); 165 (100 h) 302 (500 h); 329 (100 h)	°C °F	IS FIP	
防火性能 / Fire safety performances				
不含卤素和镉 Free from halogens and cadmium	是 / yes			
阻燃等级 Fire classification	V0		UL 94	
产品防火特性 Fire characteristic of the product	自熄 self-extinguishing		UL 1696	
氧指数 Oxygen index	>32	%	EN ISO 4589-2	
灼热丝测试 Glow wire test	960 1760	°C °F	IEC 60695	
火灾危害等级 Fire hazardous level	HL3 R22		EN45545-2	
火焰蔓延 Spread of fire	非火焰蔓延 non flame propagating		IEC EN 61386	
耐候性 / Weathering performances				
UV及耐候性 UV and weathering performance	非常好 very good		IS FIP	15 到 20 年 15 to 20 years

测试条件参照EN ISO 139温度23°C, 湿度 / 50% (如未注明测试条件)。IS FIP = FIP内部测试规范。
Tests carried out acc. EN ISO 139 at 23°C / 50% r. h. (if not indicated different). IS FIP = Internal Specification FIP

产品号 Part No.	名义尺寸 Nominal width	波型 Profile	尺寸 (nom.) Dimensions in mm (nom.)						重量 Weight	单位 PU
黑色 / black	NW		H	W	M	K	L	ID	g	个 / Pcs
BSPA-12B-BJ17	12	F/C	51,0	70,0	29,0	22,0	45,0	13,4	67,7	10
BSPA-17B-BJ23	17	F/C	51,0	70,0	31,0	22,0	45,0	18,5	63,8	6
BSPA-23B-BJ29	23	F/C	65,0	85,0	34,0	34,0	60,0	25,4	96,7	6
BSPA-29B-BJ36	29	F/C	65,0	85,0	36,0	34,0	60,0	31,4	90,2	4
BSPA-36B-BJ48	36	F/C	92,5	115,0	48,0	54,0	90,0	38,7	173,1	4
BSPA-48B-BJ56	48	F/C	92,5	115,0	50,5	54,0	90,0	50,7	157,7	4

关于产品库存, 交期, 尺寸及颜色等问题请联系我们本地的经销商或客服。
Please contact our local distribution partner or our customer service regarding product availability, lead time, other sizes and colours.

产品代码 / Number code:

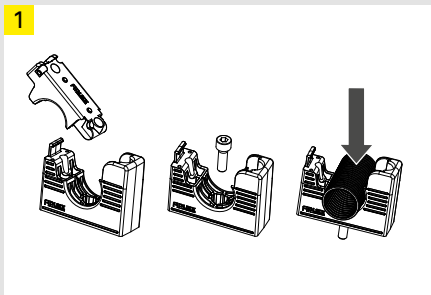


我们尽我们的知识水平所提供的数据, 图像和技术规格图反映了当前的工程技术水平。这并不包含对最后应用有关的任何责任。产品用户需根据应用进行自己的评估, 以确定产品是否符合特殊的应用条件。我们对产品的责任只考虑一般规定条件下的水平。FIP保留对产品数据和数值进行技术调整的权力。例如更改材料和加工工艺, 在保证产品性能数值不下降的情况下不会另行通知。

The provided data, images and technical specification drawings reflect the current engineering level and are to the best of our knowledge. This does not include any liability regarding the final application. Users of the products have to make their own evaluation to determine the suitability for a specific application. Our liability for these products considers the stated level within our General Conditions only. FRAENKISCHE Industrial Pipes (FIP) reserves the right to adjust specified data and values as well as implementing technical adjustments of the products e. g. change of materials and processing technologies without prior notice as long as the specified values are not reduced.

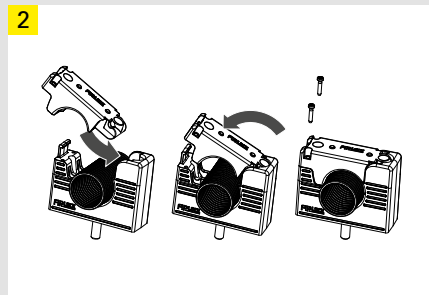
可堆叠重载固定座安装说明 带/不带球结

Assembly instruction system support stackable with/without ball-joint hinge



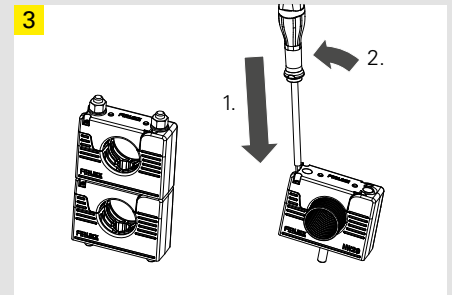
打开上盖，安装中间固定螺丝（不包含在包装里），安装波纹管。

Open cover, apply central fixing screw (not included), insert corrugated conduit.



将上盖斜向滑入底座，合上，听到一声咔哒声。用两个小螺丝锁紧上盖。

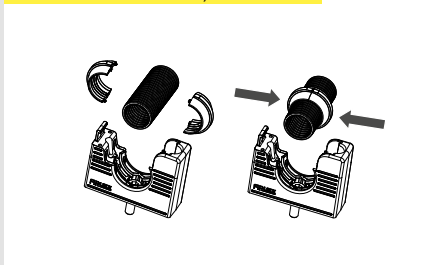
Slide cover into system support, close it with „click“ to lock and secure it with two screws.



用带垫片及螺母的螺杆或长螺丝将单个或多个固定座锁紧固定。（包装不含螺杆或螺丝）需要打开的话，在拆掉所有螺丝后，用起子在上盖侧面的倒扣处插入轻轻往外扳一下即可打开上盖。

To fix a single or stacked system support use a threaded rod with washer and nut or a long screw (not included). To open remove/release all screws and open cover by slightly bending the applied commercial screw driver.

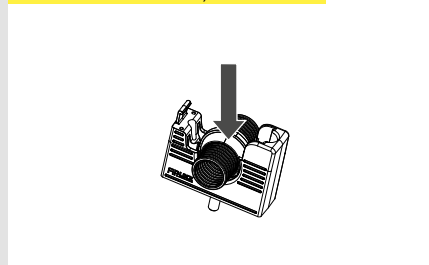
4 仅用于 BSPA-BJ / only for BSPA-BJ



对于带球结的固定座BSPA-BJ，安装时将两个半圆球结扣在波纹管上，合紧。

For ball-joint option BSPA-BJ, push both ball half-shells together at foreseen position till the „click“.

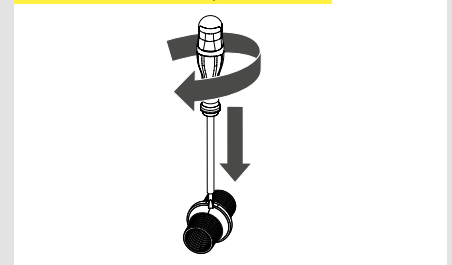
5 仅用于BSPA-BJ / only for BSPA-BJ



安装底座中间的固定螺丝，然后将装好球结的波纹管安装在底座上。然后按照上面第2步操作。

Apply central fixing screw, insert corrugated conduit together with both half-shells into system support. Continue with Pic. No. 2.

6 仅用于 BSPA-BJ / only for BSPA-BJ



需要打开球结时，用一个起子插入两半球结之间的槽，轻轻扭动，两半球结即可打开。

For re-opening push the commercial screw driver into the slot and twist slightly. Half shells can be disassembled.