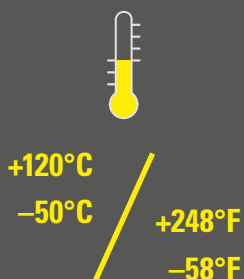


BHPA

轴向固定瓦形件

Half-shells, axial fix



材料: PA6 MOD V0 SGA

FIPLOCK® BHPA轴向固定瓦形件特别适用于需要将波纹管安装在钻孔的框架内或用固定夹固定的位置。它保护了波纹管在钻孔框架锁紧的时候不被压缩，或者防护用固定夹固定的场合的一些可以预见的对波纹管的损伤。瓦形件上一体式的固定筋对波纹管进行了轴向方向的固定，同时保证旋转方向无障碍，这样特别适合波纹管动态运动的场合。这个瓦形件同时适配FIPLOCK®波纹管细波型及粗波型型号。

Material: PA6 MOD V0 SGA

The FIPLOCK® BHPA mounting half-shells are particularly suitable for the professional installation of corrugated conduits in drilled mounting frames or in common clamps. They prevent the pipes from being compressed when the mounting frames are tightened together or when clamps are used and thus prevent foreseeable damage to the conduit during operation. The integrated rib fixes the tubes in the axial direction but remain rotatable mounted, which is crucial for dynamically moved conduit connections. The mounting half-shells are ideally suited for FIPLOCK® corrugated pipes with fine or coarse profiles.

BHPA

产品性能 / Product performances

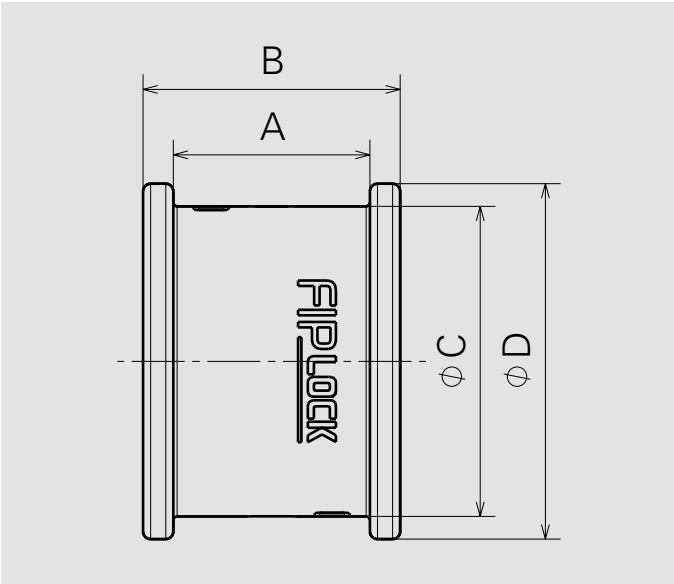
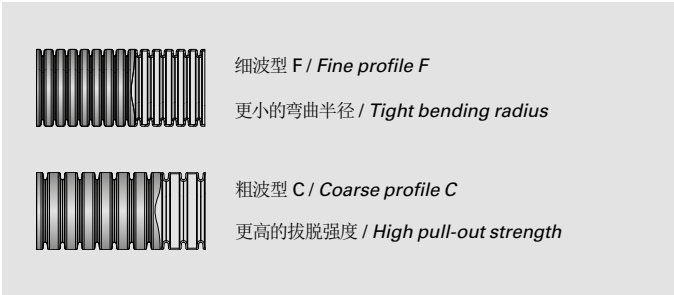
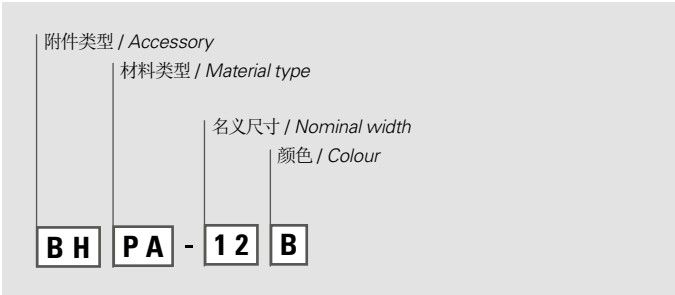
应用性能 / Application performances	特性 Characteristics	单位 Unit	标准规范 Standards, specifications	备注 Remark
温度范围 Temperature range	-50 到 / to +120 -58 到 / to +248	°C °F	IS FIP	
温度 (短周期) Temperatur (short-term)	150 (500 h); 165 (100 h) 302 (500 h); 329 (100 h)	°C °F	IS FIP	
防火性能 / Fire safety performances				
不含卤素和镉 Free from halogens and cadmium	是 / yes			
阻燃等级 Fire classification	V0		UL 94	
产品防火特性 Fire characteristic of the product	自熄 self-extinguishing		UL 1696	
氧指数 Oxygen index	>32	%	EN ISO 4589-2	
灼热丝测试 Glow wire test	960 1760	°C °F	IEC 60695	
火灾危害等级 Fire hazardous level	HL3 R22		EN45545-2	
火焰蔓延 Spread of fire	非火焰蔓延 non flame propagating		IEC EN 61386	
耐候性 / Weathering performances				
UV及耐候性 UV and weathering performance	非常好 very good		IS FIP	15 到 20 年 15 to 20 years

测试条件参照EN ISO 139温度23°C, 湿度 / 50% (如未注明测试条件)。IS FIP = FIP内部测试规范。
Tests carried out acc. EN ISO 139 at 23°C / 50% r. h. (if not indicated different). IS FIP = Internal Specification FIP

产品号 Part No.	名义尺寸 Nominal width	尺寸 (mm) Dimensions in mm				重量 Weight	包装单元 PU
黑色 / black	NW	A	B	ØC	ØD	g	个 / Pcs
BHPA-12B	12	26,0	34,0	22,0	26,5	7,4	10
BHPA-17B	17	26,0	34,0	27,5	32,0	9,6	10
BHPA-23B	23	26,0	34,0	34,5	39,5	11,8	6
BHPA-29B	29	26,0	34,0	41,0	47,0	15,5	6
BHPA-36B	36	26,0	34,0	49,0	55,0	19,3	4
BHPA-48B	48	26,0	34,0	60,5	66,5	22,1	4

关于产品库存, 交期, 尺寸及颜色等问题请联系我们本地的经销商或客服。
Please contact our local distribution partner or our customer service regarding product availability, lead time, other sizes and colours.

产品代码 / Number code:

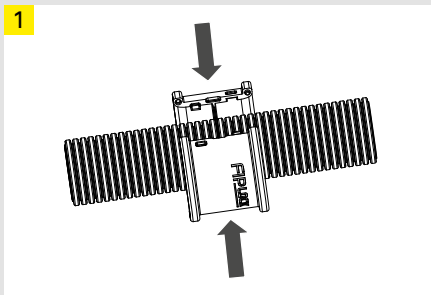


我们尽我们的知识水平所提供的数据, 图像和技术规格图反映了当前的工程技术水平。这并不包含对最后应用有关的任何责任。产品用户需根据应用进行自己的评估, 以确定产品是否符合特殊的应用条件。我们对产品的责任只考虑一般规定条件下的水平。FIP保留对产品数据和数值进行技术调整的权力。例如更改材料和加工工艺, 在保证产品性能数值不下降的情况下不会另行通知。

The provided data, images and technical specification drawings reflect the current engineering level and are to the best of our knowledge. This does not include any liability regarding the final application. Users of the products have to make their own evaluation to determine the suitability for a specific application. Our liability for these products considers the stated level within our General Conditions only. FRAENKISCHE Industrial Pipes (FIP) reserves the right to adjust specified data and values as well as implementing technical adjustments of the products e. g. change of materials and processing technologies without prior notice as long as the specified values are not reduced.

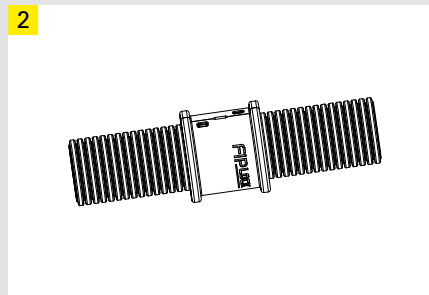
波纹管固定瓦形件安装说明

Assembly instruction conduit mounting half-shells



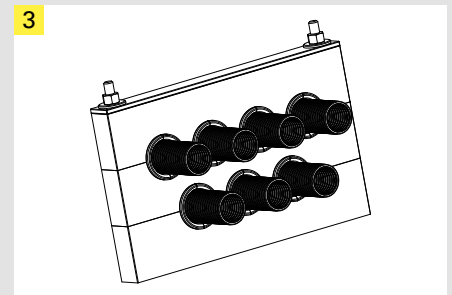
将瓦形件的两半合在一起直到听到“咔哒”一声。

Push both half-shells together till „click“ to lock.



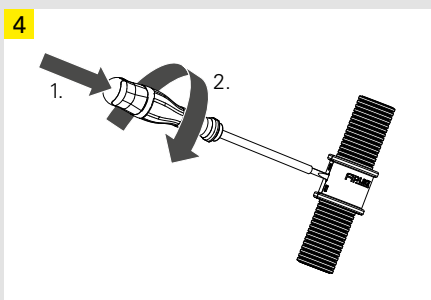
两半瓦形件合紧后能够在波纹管上自由旋转，准备将其安装在固定座上。

Freely swiveling on pre-mounted corrugated conduit and ready to install to mounting bracket.



将安装好BHPA的波纹管安装在固定座上，确保波纹管没有被挤压，且可自由转动。轴向被瓦形件的筋固定，不可轴向窜动。

Corrugated conduit with BHPA applied in a mounting bracket (individual, not included) to ensure that the conduit can rotate and is not squeezed. Axial fixation by internal rib.



打开方式, 1. 将起子插入瓦形件之间的槽中, 2. 轻微转动一下。瓦形件两半即可打开。

For re-opening 1. push the commercial screw driver into the slot and 2. twist slightly. Half shells can be disassembled.